

Power Tools

ProSet® 1600

Compact, lightweight and reliable pneumatic/hydraulic power tool, ideal for production line environments.

For setting rivets from 2.0mm and 3/32" - 5/32" (2.4-4.0mm). High force to weight ratio and innovative ergonomic design for maximum user efficiency and comfort.

Features and Benefits

- Lightweight robust construction
- Comfortable two finger, low activation force trigger
- Directionable air exhaust
- Quick disconnect front-end assembly & Stem Collection System (MCS)
- Spring return for a reliable fast setting cycle
- Energy saving On/Off, left or right swivel air fitting
- Rivet Presenter compatible
- Suitable for use with Remote Stem Collection System (MCS5000)
- Air-isolation switch during MCS removal

Specifications ProSet® 1600MCS

Weight	2.29 lb (1.04 kg)
Length	10.71 in (272 mm)
Height	8.94 in (227 mm)
Tool stroke	0.71 in (18 mm)
Working air pressure	72.5 - 100 psi (5.0 - 6.9 bar) dry, filtered
Pulling force	1,090 lb @ 90 psi (4,850 N @ 6.2 bar)
Force/Weight ratio	476 lbf/lb (4.6 kN/kg)
Air consumption	2.47 scfm (max) [70 liters/min (max)]



Optional Accessories

Part Number	Description
PRN214	Nosepiece for 2.0 mm Micro Rivets
PRG402-02	Jaws for 2.0 mm Micro Rivets
FA203-408	Adaptor Kit for MCS5000 (remote MCS)
FAN239-177	Stem Collection System Retrofit Kit
RP4-486 Rivet	Rivet Presenter Receptacle

Optional Special Front Ends

FAN239-174	Front End 5" Length Extension Kit
------------	-----------------------------------



Extended Nose Housing

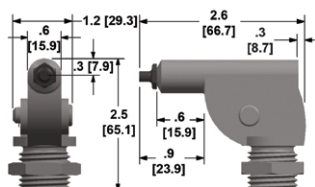
Power Tool Accessories

Special Front-End Accessories

Where limited access applications make it impossible to use our riveting tools in their standard configurations, a series of specialized setting heads and front end kits are available.

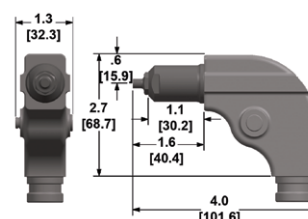
PRH830 Very compact 90° Corner Head

- Designed for extremely restricted access
- Sets all POP Avdel rivets up to and including aluminum alloy 5/32" (4.0mm) diameter
- Weight: 0.68lb (0.31 kg)



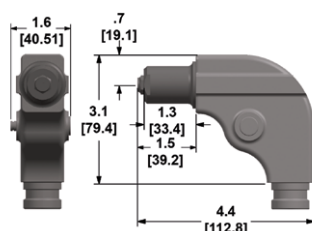
PRH840 Robust 90° Corner Head

- Suitable for use with wide range of riveting tools
- Recommended for setting POP Avdel rivets up to and including steel 3/16" (4.8mm) diameter
- Weight: 1.1lb (0.5 kg)



PRH850 Heavy Duty 90° Corner Head

- Designed for high volume usage with higher capacity POP Avdel setting tools
- Sets all POP Avdel rivets up to and including open end 1/4" (6.4mm) diameter
- Weight: 1.68lb (0.76 kg)

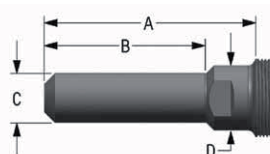


Special Setting Head Kits

Setting Head	Adapter Kits for Tool Series				
	ProSet® 1600	ProSet® 2500	ProSet® 3400	510A	540
PRH830	not available	PRH830-2500	PRH830-3400	PRA967	PRA965
PRH840	not available	PRH840-2500	PRH840-3400	PRH840-510	PRH840-540
PRH850	not available	-	PRH850-3400	-	PRH850-540

Front End Kits

A wide range of front end kits ensures that the POP Avdel setting tool range is able to reliably set rivets even in deep or narrow access applications.



Tool Series	Part Number	A		B		C		D	
		in	mm	in	mm	in	mm	in	mm
ProSet® 1600	FAN239-174 ¹⁾	5.12	130.0	3.78	96.0	0.68	17.3	1.10	28.0
	FAN275-132 ¹⁾	5.49	139.5	3.78	96.0	0.81	20.6	1.26	32.0
ProSet® 2500	FAN275-198 ^{1) 2)} (up to 5/32")	5.30	134.5	2.17	55.0	0.68	17.3	1.26	32.0
	FAN275-229 ^{1) 2)} (3/16" Al-St)	5.30	134.5	2.17	55.0	0.68	17.3	1.26	32.0
ProSet® 3400	FAN276-075 ¹⁾	7.87	200.0	6.10	155.0	0.88	22.4	1.50	38.0
510A	PRG511-003 (std.set up on 511A)	4.09	103.9	3.00	76.2	0.68	17.4	0.88	22.2
5250A	PRG5201-001 ²⁾ (std. set up on 5251A)	3.38	85.7	1.86	47.1	0.68	17.4	0.90	22.9
540	PRG541-001 (std. setup on 541)	5.60	142.1	3.55	90.1	0.90	22.8	1.25	31.8



¹⁾ Quick disconnect

²⁾ Reduced diameter version